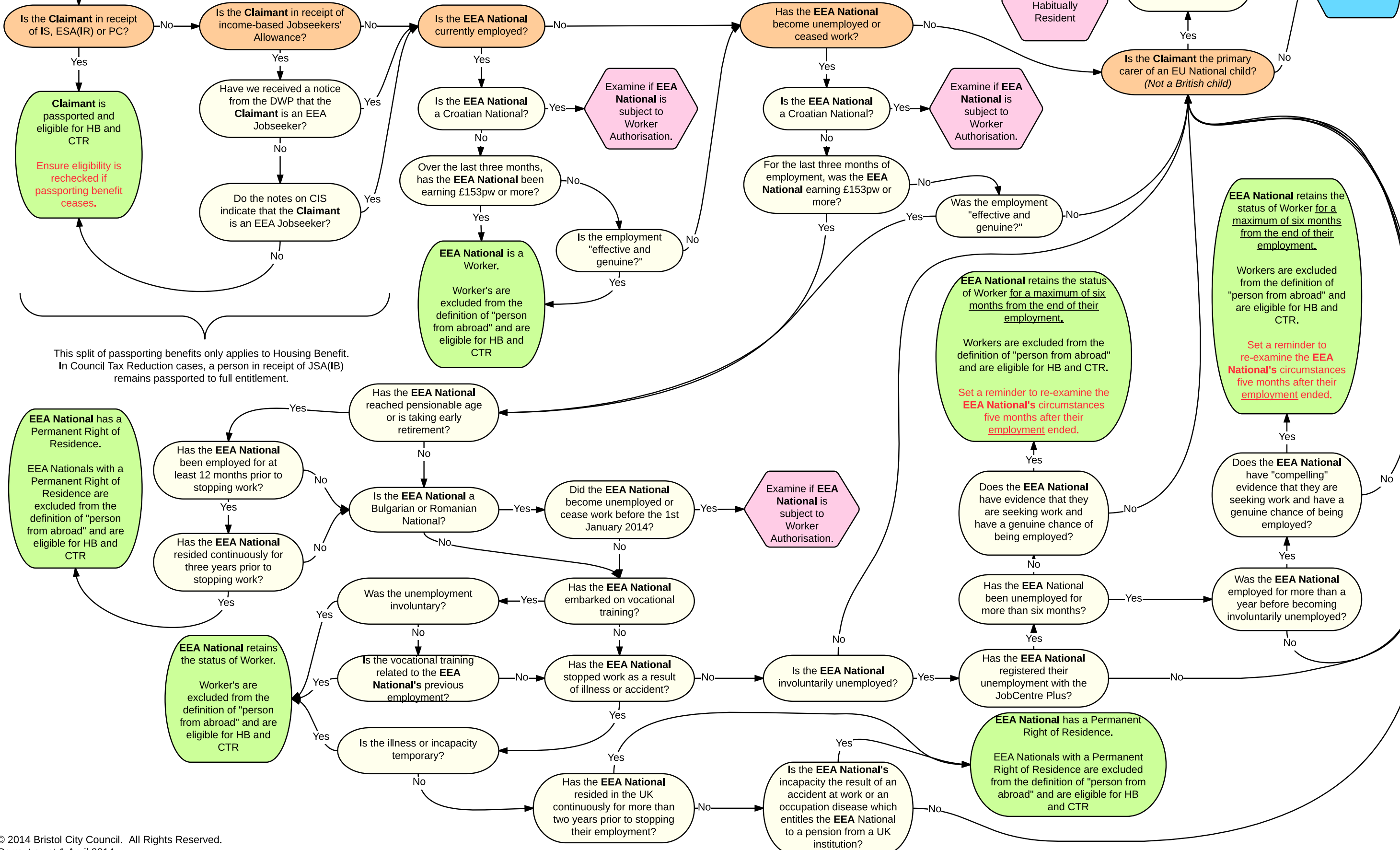


Claimant or a member of the Claimant's family (see note, right) is an **EEA National**

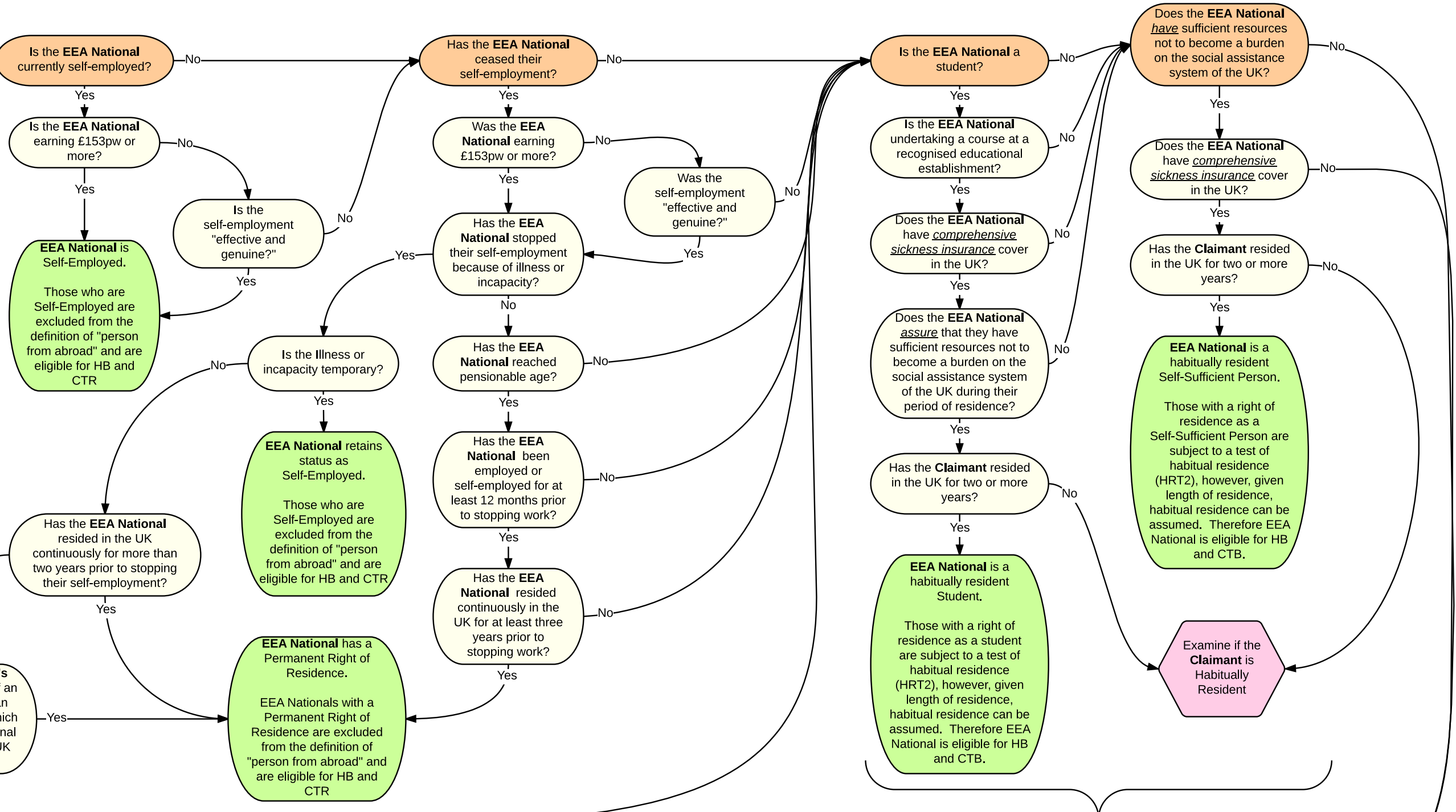
Throughout this flowchart where the term **EEA National** is used, the test can apply to a National of an EEA State who is:
 - the claimant;
 - the claimant's spouse or civil partner;
 - direct descendants of the claimant or of their spouse or civil partner, who are under 21 or dependants;
 - dependant direct relatives in the ascending line of the claimant or of their spouse or civil partner.

Where this flowchart uses the term **Claimant**, the test must be applied to the claimant.



This split of passporting benefits only applies to Housing Benefit. In Council Tax Reduction cases, a person in receipt of JSA(IB) remains passported to full entitlement.

Continuing from Page 1 (Click to return)



It is important to note the different requirement to demonstrate *sufficient resources* between EEA Students and EEA Self-Sufficient Persons. EEA Students need only assure the Secretary of State (by means of a declaration or otherwise) that they will not become a burden on the social assistance system. However, EEA Self-Sufficient Persons must have sufficient resources not to become a burden, meaning they are subject to more scrutiny about their ability to support themselves and their family.

